

Tasman

Model Year 2026



Movement that inspires

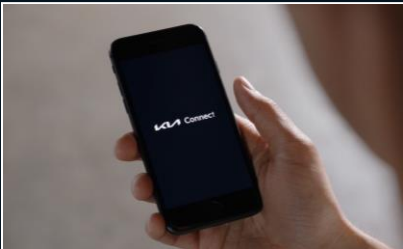
Features



Integrated Panoramic Display



3,500kg Maximum Braked Towing Capacity*



Kia Connect & OTA Updates^[K]



2x 240V Power Outlets
[Tub & Behind Centre Console]
(SX+, X-Line & X-Pro)⁻



Surround View Monitor*
(X-Line & X-Pro)



2nd Row Under-Seat Storage



Dual Wireless Phone Charger^[Q]
(X-Line & X-Pro)

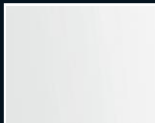


Large Folding Console Table
(X-Line & X-Pro)

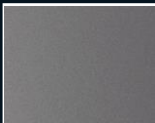


Ground View Monitor
(X-Pro)

Exterior Colours



Clear White
(UD)



Steel Grey
(KLG)[#]



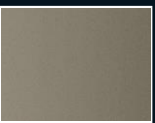
Interstellar Grey
(AGT)[#]



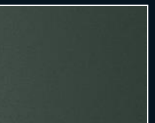
Aurora Black Pearl
(ABP)[#]



Denim Blue
(DNB)[#]



Tan Beige
(TAM)[#]



Cityscape Green
(CGE)[#]
(X-Line & X-Pro)

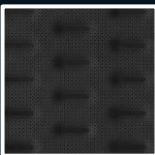


Runway Red
(CR5)[#]
(X-Line & X-Pro)

Interior Colours



Onyx Black &
Medium Grey
Cloth Seats
(S & SX)



Onyx Black & Medium
Grey Cloth / Artificial
Leather Combination
Seats(SX+)



Onyx Black & Medium
Grey Artificial Leather
Seats
(X-Line & X-Pro)

Wheels



17" Black Steel
(S)



17" Machined Alloy
(SX)



18" Machined Alloy
(SX+ & X-Line)



17" Black Alloy
(X-Pro)

For full terms and conditions, visit www.kia.com.au. Specifications apply to 2026 Model Year Tasman. Kia Australia reserves the right to discontinue or change the models, features, specifications, options, designs and prices of products referred to in this sheet without incurring any liability whatsoever to any purchaser or prospective purchaser of any such products. All information and illustrations referred to in this sheet are based on data available at the time of publication and subject to change without notice.

*Maximum towing capacity braked using a Genuine Kia tow pack. Subject to State and Territory regulations. Occupants or luggage may need to be restricted to not exceed GCM and GVM limits. For further details, please consult your preferred Kia Dealer or refer to the Owner's Manual.

-AC outlet provides 240V, 50Hz power with a maximum out-put of 400W. Using appliances that do not match these specifications may lead to reduce performance, overheating, damage, or a shorter appliance lifespan.

*Safety technologies are supplemental systems and do not replace the need for the driver to exercise care and attention. For more information about Kia's safety systems, please consult your preferred Kia dealer or refer to the Owner's Manual.

^[Q]Wireless charging is only compatible with phones featuring Qi technology or an adapter.

[#]Premium paint at additional cost.

⁻Available only on grades SX or higher.

^[K]Kia Connect is a connected car service, which will only function once activated. For more details on Kia Connect, visit kia.com/au/kiaconnect.

©2025 Kia. All rights reserved. Kia and the Kia logo are trademarks of Kia Corporation.